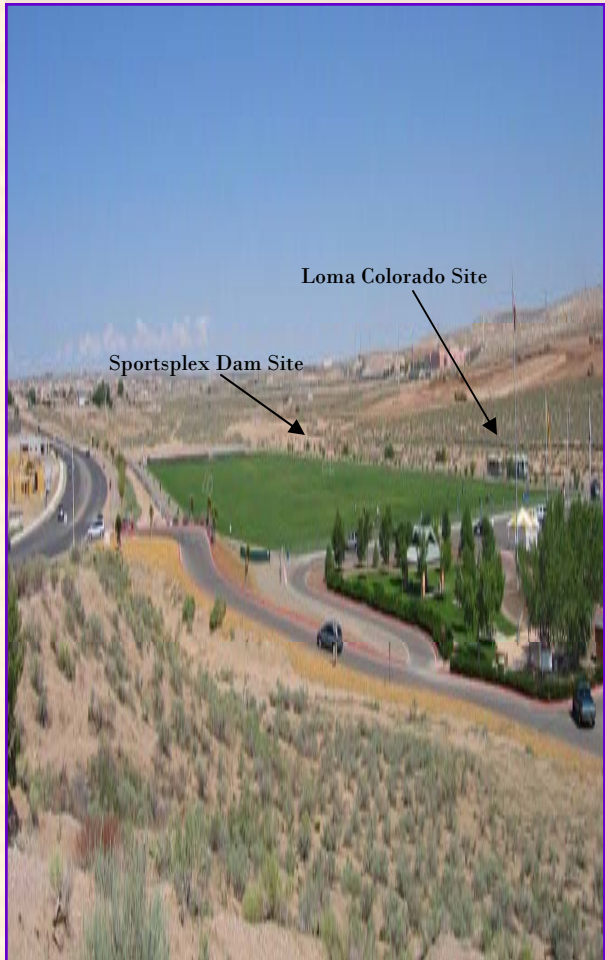


PROTECTING THE TERRITORY

The Montoya's Arroyo extends 13 miles, from the Rio Grande to Mariposa, crossing from the Village of Corrales to the City of Rio Rancho, and Sandoval County. The watershed area is over 50 square miles.

This is a multi-agency project which involves designing a flood-control dam and retention pond just west of the existing Sports Complex on High Resort Blvd. in Rio Rancho. The completed retention pond and improvements will serve as multi-use recreation and flood control for playing field area in the Sports Complex. It is the final piece in SSCAFCA's longtime goal of protecting Corrales, and northern Rio Rancho.

As PARTNERS IN PROGRESS, we sensibly manage our watersheds thereby enhancing the quality of life, creating multi-use facilities, setting examples of leadership in planning for the future, educating the public of the potential hazards to health, safety and welfare, all while administering public funds prudently.



SSCAFCA

MONTOYAS ARROYO SPORTS COMPLEX DAM



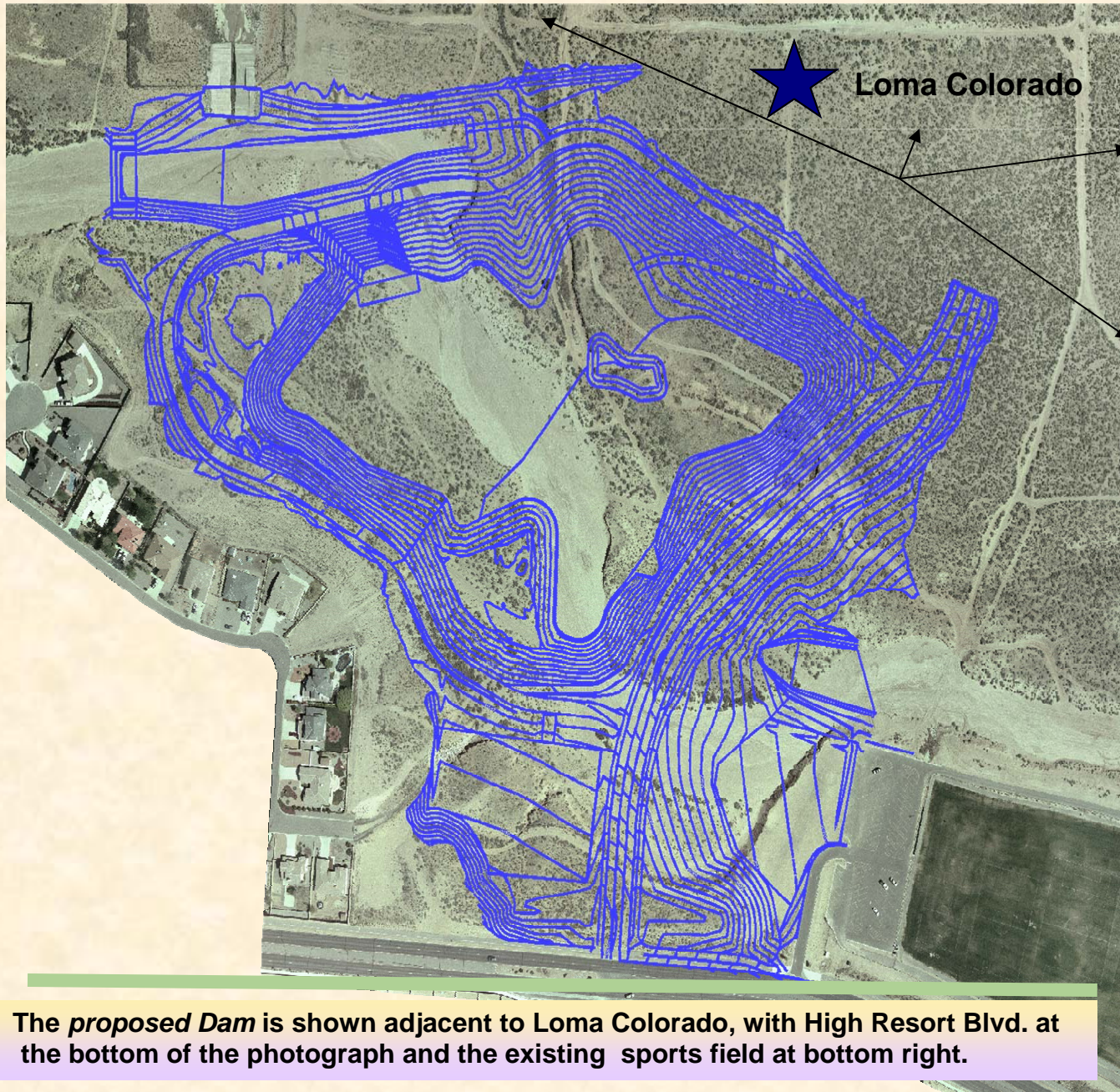
TO MAKE IT OFFICIAL

1041 Commercial Dr. SE
Rio Rancho, NM 87124

505-892-RAIN (7246)
505-892-7241 (fax)
www.sscafca.com

SSCAFCA





The Sports Complex Dam, will be the largest dam in SSCAFCA's district, controlling over 100,000,000 gallons of water.



The *proposed Dam* is shown adjacent to Loma Colorado, with High Resort Blvd. at the bottom of the photograph and the existing sports field at bottom right.

1041 Commercial Dr. SE
Rio Rancho, NM 87124

505-892-RAIN (7246)

SSCAFCA